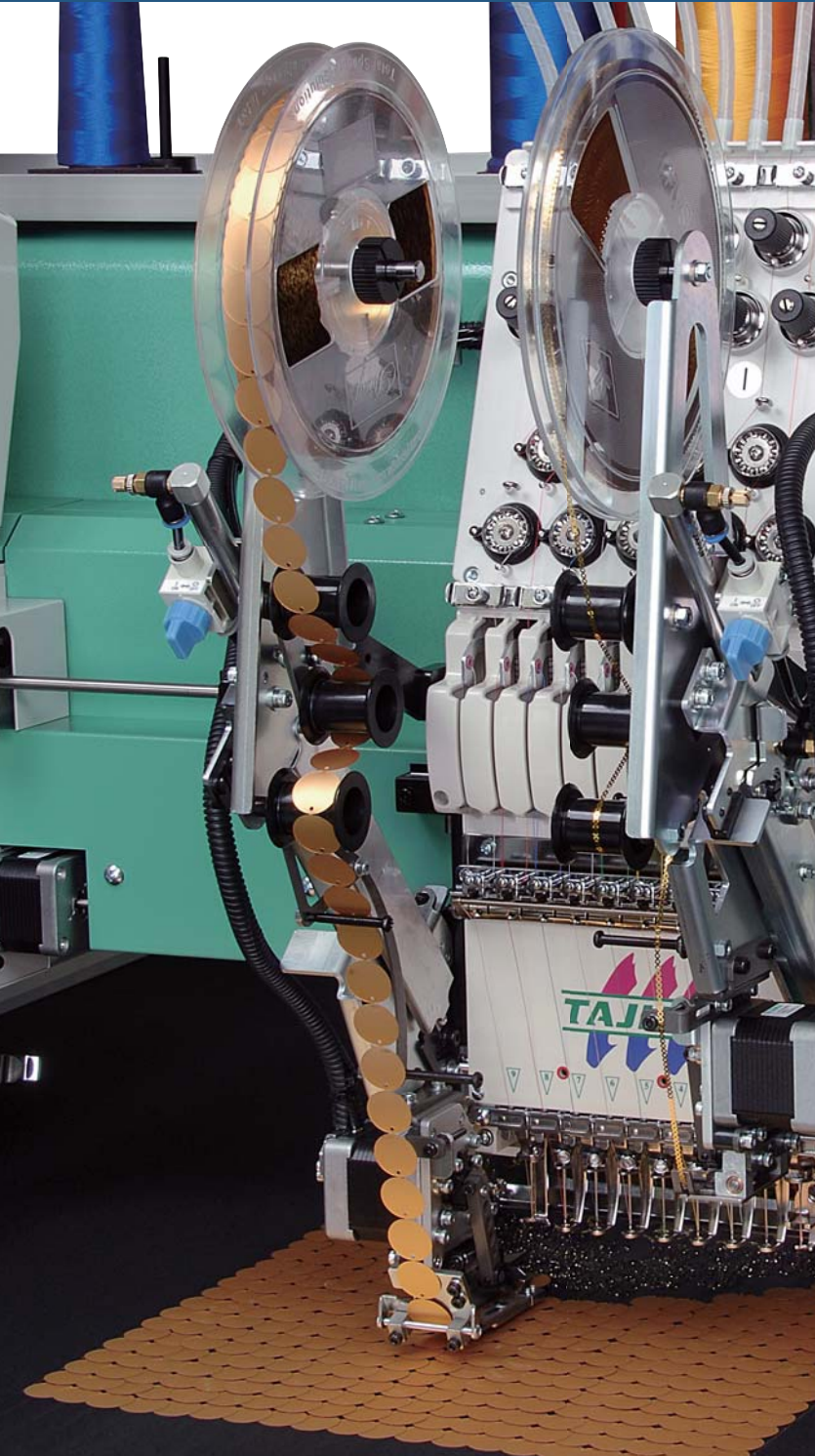


Sequin Device IV

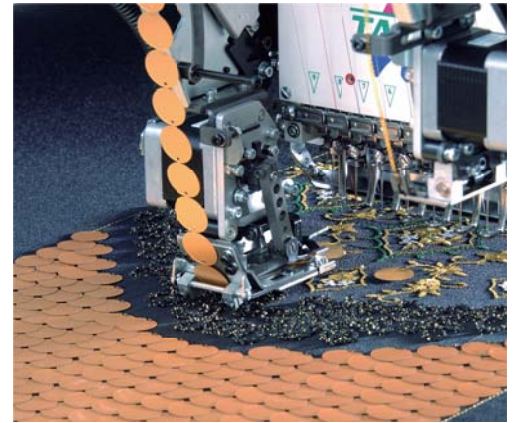
Max. speed
1,000 rpm

Sequins in diameter of 2 - 22mm are applicable !

Wide range of sequins from small to large sizes or in various shapes like noncircular or eccentric type are applicable for creation of you designs as needed, depending on your applications.



FUNCTION GUIDE



Stable operation at a maximum speed of 1,000 rpm

Various kinds of improvements by the change of feed pawl in shape and others have stabilized the feed of sequins ! Higher productivity and quality are well compatible now.

Advanced workability

Drastic review of basic structure of the device has simplified adjustment works to change the size or cutting position of sequins.

Friendly to working conveniences

Sequin feed amount is changeable by the setting on the operation panel. Either manual or automatic operation is selectable to lift up or down the Sequin device. This allows you to speed up related works like threading or replacement of frames.

Applicable models

TFGN(-C) Series

TFMS-C (Single head)

TFGS Series

TEMX-C (Single head)

TFMX(-C) Series

TEJTII-C "NEO"

TFMX-II(C) Series

TLMX Series

TFMS-IIC Series

TCMX Series

TFMX-C (Single head)

* Sequins of 10mm ~ 22mm dia. are optionally available.

[Factory option]

Distributed by

Tajima Industries Ltd.

19-22, Shirakabe 3-chome, Higashi-ku Nagoya 461-0011 JAPAN
TEL : 81-52-932-3444, 3445 FAX : 81-52-932-2457, 3449
<http://www.tajima.com>

Manufactured by

Tokai Industrial Sewing Machine Co.,Ltd.

Head office / Main Plant
No. 1800 Ushiyama-cho, Kasugai, Aichi-pre. 486-0901 JAPAN
Technical center
1103-1 Ikeda, Muranaka, Komaki, Aichi-pre. 485-0082 JAPAN